



# SAFECOAT

Fire Solutions

[WWW.SAFECOATFIRE.COM](http://WWW.SAFECOATFIRE.COM)



# **TABLE OF CONTENTS**

<b>Number</b>	<b>Product Category</b> (All Products have their individual Primers)	<b>Page No.</b>	<b>No. Of Products</b>
<b>I</b>	<b>FIRE RETARDANT PAINTS</b>	<b>3-4</b>	<b>11</b>
<b>II</b>	<b>HEAT RESISTANT PAINTS</b>	<b>5-6</b>	<b>9</b>
<b>III</b>	<b>THERMAL INSULATION ENERGY SAVING COATINGS</b>	<b>7-8</b>	<b>9</b>
<b>IV</b>	<b>ANTI CORROSSION PAINTS + COATINGS</b>	<b>9</b>	<b>5</b>
<b>V</b>	<b>ROAD MARKING PAINTS</b>	<b>10</b>	<b>4</b>

# **CATEGORY I : FIRE RETARDANT PAINTS**



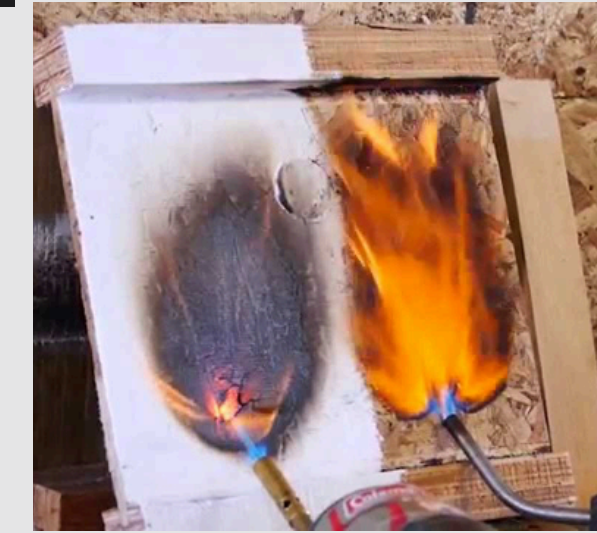
**SC 060 FIRE RETARDANT PAINT FOR CABLES**

**INTUMESCENT WATER BASED COATING  
TEMPERATURE RANGE - > 900 DEGREES  
FIRE RATING OF 30 MINS - 4 HOURS**



**SC 080 FIRE RETARDANT PAINT FOR WOOD**

**NON INTUMESCENT WATER BASED COATING  
AVAILABLE IN CLEAR COAT + WHITE COLOUR  
FIRE RATING OF 30 MINS - 4 HOURS**



**SC 090 FIRE RETARDANT PAINT FOR WALLS / GYPSUM BOARD**

**NON INTUMESCENT + INTUMESCENT W/B  
TEMPERATURE RANGE - >200 DEGREES  
FIRE RATING OF UPTO 120 MINUTES**



**SC 060 EPOXY FIRE RETARDANT PAINT FOR STRUCTURAL STEEL**

**INTUMESCENT WATER BASED COATING  
APPLICATION AFTER CLEANING SURFACE  
FIRE RATING OF 30 MINS - 4 HOURS**



**SC 040 FIRE RETARDANT TOPCOAT PAINT FOR CLOTH**

**NON INTUMESCENT W/B CLEAR COATING  
CLASS 1 FLAME RESISTANCE (100 Degrees)  
DOES NOT AFFECT CLOTH FLEXIBILITY**



**SC 010 FIRE RETARDANT PUTTY FOR METAL STRUCTURES**

**INTUMESCENT W/B (Avl in Solvent/ Epoxy Base)  
TEMPERATURE RANGE - >250 DEGREES  
FIRE RATING OF UPTO 120 MINUTES**



**SC 050 FIRE RETARDANT PAINT FRC SHEET**

**INTUMESCENT WATER BASED COATING  
TEMPERATURE UPTO 200 DEGREES  
FIRE RATING OF 120 MINS**



**SC FIRE RETARDANT DOORS**

**CLEAR GLASS / CUSTOM COLOUR AVL  
STABILITY, INTEGRATION + INSULATION  
FIRE RATING OF 120 MINS**



**SC 007 HIGH VOLTAGE ELECTRICAL INSULATION COATING**

**HIGH DIELECTRIC STRENGTH (122 KV/mm)  
TEMPERATURE STABILITY UPTO 200°C  
UV AND MOISTURE RESISTANCE**



**SC FIRE RETARDANT PAINT FOR RAILWAYS**

**WHITE COLOUR COAT ON TOP OF CARRAIGE  
WATER BASED INTUMESCENT COATING  
FIRE RATING OF >120 MINS**



**SC 011 VERMICULITE FIREPROOFING COATING**

**DRY POWDER / WATER FORM AVAILABLE  
TEMPERATURE RANGE 550 - 600 DEGREES  
FIRE RATING OF UPTO 240 MINUTES**

### NOTES

All Products have their Individual thinners and primers. The materials are available in 3 categories - Water Based, Solvent Based and Epoxy Based. The Temperature range increases with the coatings. All products have Hydrophobic properties. Colours can be customized with a nominal charge of 50 rupees per litre.

# CATEGORY II : HEAT RESISTANT PAINTS



## HEAT RESISTANT 100 ELASTOMERIC AND WATERPROOFING COAT

REDUCES SURFACE TEMPERATURE BY 40%  
PROVIDES SOLAR REFLECTIVE INDEX OF 97%  
HEAT RATING OF 4 HOURS IN 100 DEGREES



## HEAT RESISTANT 250 COATING

REDUCES SURFACE TEMPERATURE BY 40%  
PROVIDES SOLAR REFLECTIVE INDEX OF 97%  
HEAT RATING OF 4 HOURS IN 250 DEGREES



## HEAT RESISTANT 400 COATING

REDUCES SURFACE TEMPERATURE BY 40%  
PROVIDES SOLAR REFLECTIVE INDEX OF 97%  
HEAT RATING OF 6 HOURS IN 400 DEGREES



## HEAT RESISTANT 600 COATING (SOLVENT BASED)

REDUCES SURFACE TEMPERATURE BY 40%  
PROVIDES SOLAR REFLECTIVE INDEX OF 97%  
HEAT RATING OF 6 HOURS IN 600 DEGREES



## HEAT RESISTANT 800 COATING (SOLVENT BASED)

ENERGY EFFICIENCY OF 15% EVERYDAY  
CORROSION + OXIDATION RESISTANT  
INTERNAL + EXTERNAL INDUSTRIAL USE



## HEAT RESISTANT 1200 COATING (SOLVENT BASED + BINDER)

ENERGY EFFICIENCY OF 15% EVERYDAY  
MAJORLY USED IN INDUSTRIAL FURNACES  
ADDITIONAL LAYER OF ELECTRICITY SAVING



### **HEAT RESISTANT 1800 COATING (INDUSTRIAL FURNACE + CHIMNEYS)**

**COMPOSITE WATER BASED COATING  
TEMPERATURE UPTO 1200 DEGREES  
EXTREME ADHESIVE PROPERTIES**



### **HEAT RESISTANT EPOXY PUTTY**

**POWDERED FORM, MIXED WITH WATER  
TEMPERATURE STABILITY UPTO 2 HOURS  
OFF WHITE, MATTE FINISH**



### **HEAT RESISTANT PU COATING FOR RAILWAY CARRIAGES**

**WATER BASED NON INTUMESCENT COATING  
REDUCES THE TEMPERATURE INPUT BY 40%  
APPLIED IN INNER-LINNINGS OF RAIL BOGGIES**

### **NOTES**

All Products have their Individual thinners and primers.

The materials are available in 3 categories - Water Based, Solvent Based and Epoxy Based.

The Temperature range increases with the coatings.

All products have Hydrophobic + Heat Blocking properties.

Colours can be customized with a nominal charge of 50 rupees per litre (Red, Yellow, White and Brown).

# **CATEGORY III : HEAT RESISTANT THERMAL INSULATION COATING**



**HEAT RESISTANT THERMAL INSULATION  
100 COATING**

**REDUCES HEAT LOSS AND SAVES ENERGY  
CONTAINS HOLLOW CERAMIC SPHERES  
WITH NITROGEN AND CO2**



**HEAT RESISTANT THERMAL INSULATION  
600 COATING (EPSI)**

**SILICON BASED EPOXY COATING  
CONTAINS FINE CERAMIC MICROSPHERES  
FURNACES AND CHIMNEY SURFACES**



**HEAT RESISTANT THERMAL INSULATION  
250 COATING**

**REDUCES HEAT LOSS AND SAVES ENERGY  
CONTAINS HOLLOW CERAMIC SPHERES  
WITH NITROGEN AND CO2**



**HEAT RESISTANT THERMAL INSULATION  
800. COATING**

**ENERGY EFFICIENCY OF 15% EVERYDAY  
CORROSION + OXIDATION RESISTANT  
INTERNAL + EXTERNAL INDUSTRIAL USE**



**HEAT RESISTANT THERMAL INSULATION  
400 COATING**

**OVENS, FURNACES, PIPELINES AND BOILERS  
ENERGY SAVING OF UPTO 15%  
RECOMMENDED WITH SURFACE CLEANER**



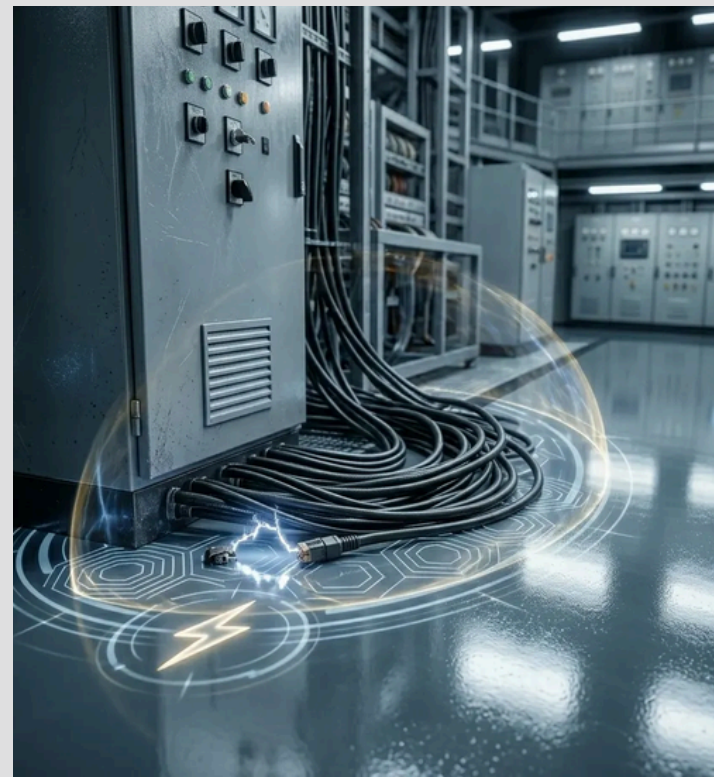
**HEAT RESISTANT THERMAL INSULATION  
1200 COATING (WATER BASED)**

**ENERGY EFFICIENCY OF 15% EVERYDAY  
MAJORLY USED IN INDUSTRIAL FURNACES  
ADDITIONAL LAYER OF ELECTRICITY SAVING**



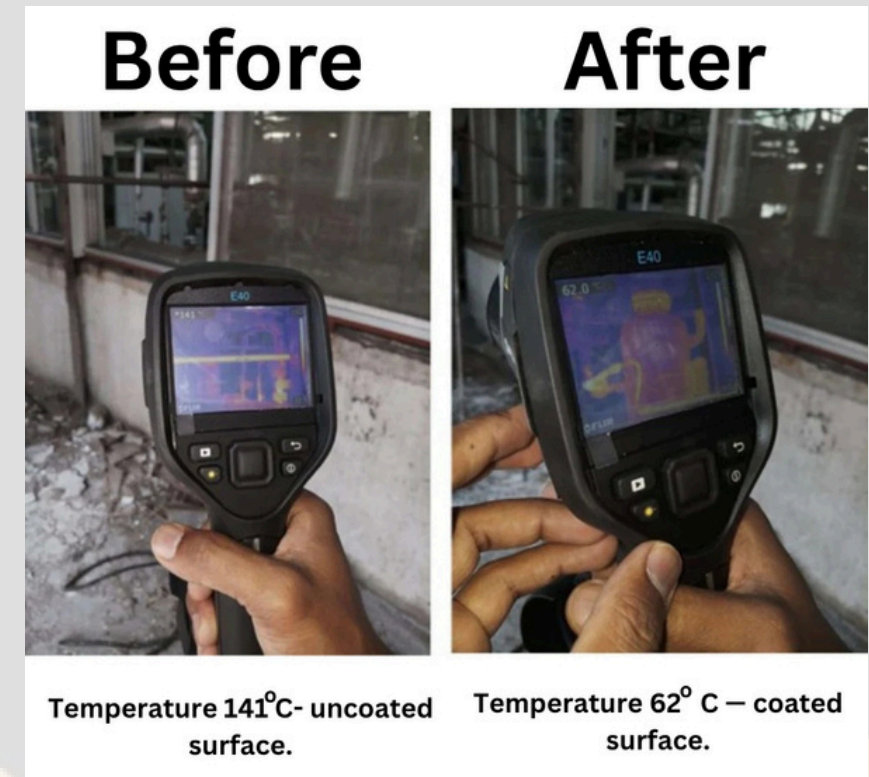
### **THERMAL INSULATION 1800 COATING (INDUSTRIAL FURNACE + CHIMNEYS)**

**COMPOSITE WATER BASED COATING  
TEMPERATURE UPTO 1800 DEGREES  
EXTREME ADHESIVE PROPERTIES**



### **HIGH VOLTAGE ELECTRICAL + Thermal INSULATION COATING**

**HIGH DIELECTRIC STRENGTH (122 KV/mm)  
TEMPERATURE STABILITY UPTO 800°C  
UV AND MOISTURE RESISTANCE**



### **STEAM INSULATION COATING OVER STEAM PIPELINES**

**HIGHLY USED IN STEAM INDUSTRIES  
PROTECTS METALLIC SURFACES WITH TEMP  
UPTO 400 DEGREES  
APPLIED AS - PRIMER + BASECOAT+TOPCOAT**

### **NOTES**

All Products have their Individual thinners and primers.

The materials are available in 3 categories - Water Based, Solvent Based and Epoxy Based.

All products have Ceramic Microspheres properties that creates a layer of nitrogen and Co2 to prevent heat loss.

The products provide an energy saving of upto 15% per day resultion in lesser cost of operations.

# **CATEGORY IV : ANTI CORROSSION PAINTS + COATINGS**



**ANTI CORROSIVE  
PAINT COATING**

**WATERPROOF AND OXIDATION FREE  
ENVIRONMENTAL FRIENDLY MATERIALS  
ASTM AND CBRI CERTIFIED TESTING**



**EPOXY FLOOR  
COATING**

**SOLVENT BASED ANTI SKID TECHNOLOGY  
CORROSION RESISTANT  
ALL INDUSTRIAL + COMMERCIAL FLOORING**



**PU ANTI CORROSIVE  
COATING**

**GREY FINISH IN SOLVENT BASED  
APPLICATION THROUGH INDUSTRIAL GRADE  
SPRAY GUN**



**ANTI CORROSIVE EPOXY COATING  
FOR EXPOSED STEEL**

**STEEL AND CONCRETE STRUCTURES  
CORROSION + OXIDATION RESISTANT  
PRIMER + 3 SEPERATE LEVELS OF COAT**



**ACRYLIC SEALANT  
COATINGS**

**WHITE COLOUR WITH MATTE FINISH  
SEMI LIQUID USED FOR SEALING JOINTS  
RECOMMENDED ON METAL SURFACE**

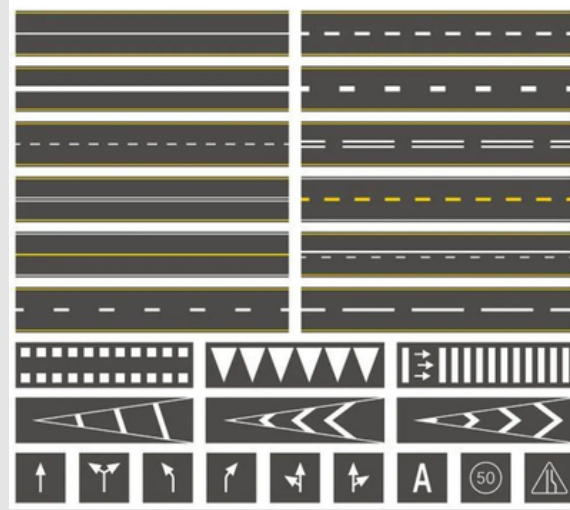
## **NOTES**

All Products have their Individual thinners and primers.

The materials are available in 3 categories - Water Based, Solvent Based and Epoxy Based.

Highly recommended for industrial and commercial use on heavy duty mchineries and flooring.

# **CATEGORY V : ROAD MARKING PAINTS**



**AIR DRYING ROAD MARKING  
PAINTS**

**SOLVENT BASED NON INTUMESCENT  
COMPLIANT WITH TT-P-1952D TYPE I AND  
TYPE II SPECIFICATIONS**



**ANTI SKID  
PAINTS**

**SOLVENT BASED ANTI SKID TECHNOLOGY  
CORROSION RESISTANT  
ALL INDUSTRIAL + COMMERCIAL + ROAD  
COVERAGE**



**THERMOPLASTIC ROAD MARKING  
PAINT**

**YELLOW GLOSSY FINISH  
WATER BASED AND OXIDATION FREE**



**FLORO LUMINESCENT  
COATING**

**IDELLY USED IN AIRCRAFTS AND ROADS  
SOLVENT BASED  
CONTAINS LUMINESCENT PROPERTIES**

## **NOTES**

All Products have their Individual thinners and primers.  
The materials are available in 3 categories - Water Based, Solvent Based and Epoxy Based.  
Highly recommended for Roads and Industrial Flooring.



## CONTACT US



[www.safecoatfire.com](http://www.safecoatfire.com)



[info@safecoatfire.com](mailto:info@safecoatfire.com)



+91 9820214742



+91 9167026305

**GST:** 27AFQFS1010R1ZH



Visit Our Website